



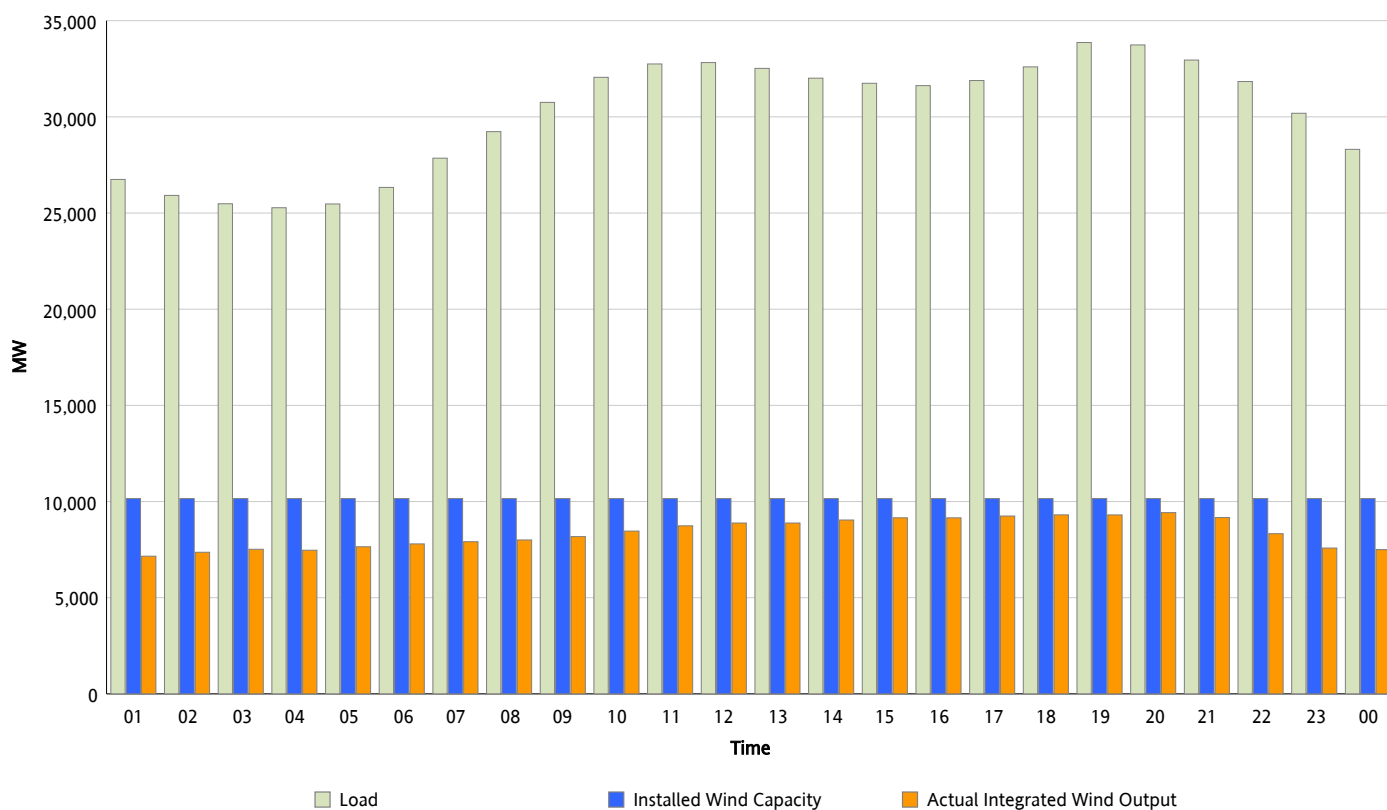
ERCOT Grid Operations

Wind Integration Report : 02/09/2013

Peak Load	33,867 MW
Load Peak Hour (HE)	19
Wind Over Peak	9,306 MW
Wind Record 02/09/13	9,481 MW
Max Wind Value*	9,481 MW
Wind Peak Time	19:08
Wind Integration %	27.82 %

Hourly Average Actual Load vs. Actual Wind Output

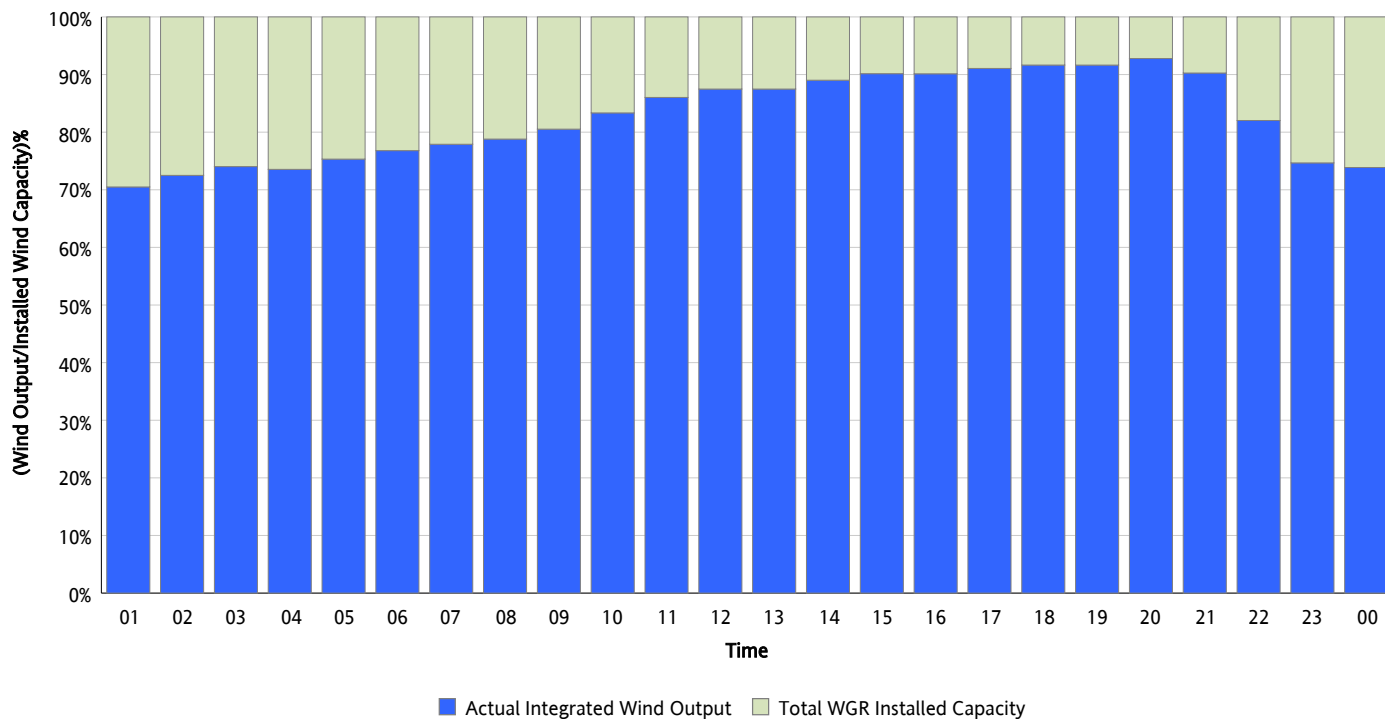
02/09/2013



* Wind Record and Wind Max represent instantaneous values and the rest of the values are integrated over the hour

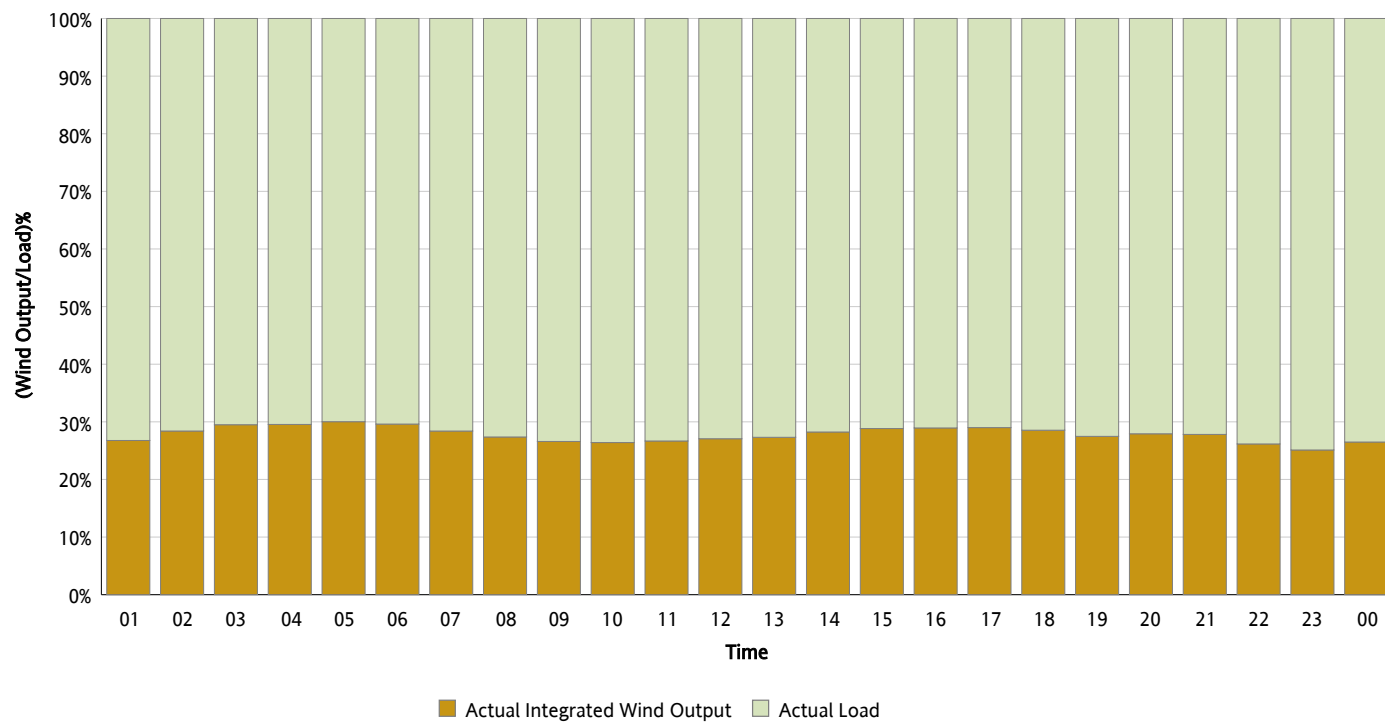
Actual Wind Output as a Percentage of the Total Installed Wind Capacity

02/09/2013



Actual Wind Output as a Percentage of the ERCOT Load

02/09/2013



ERCOT Load vs. Actual Wind Output

02/02/2013 - 02/09/2013

